



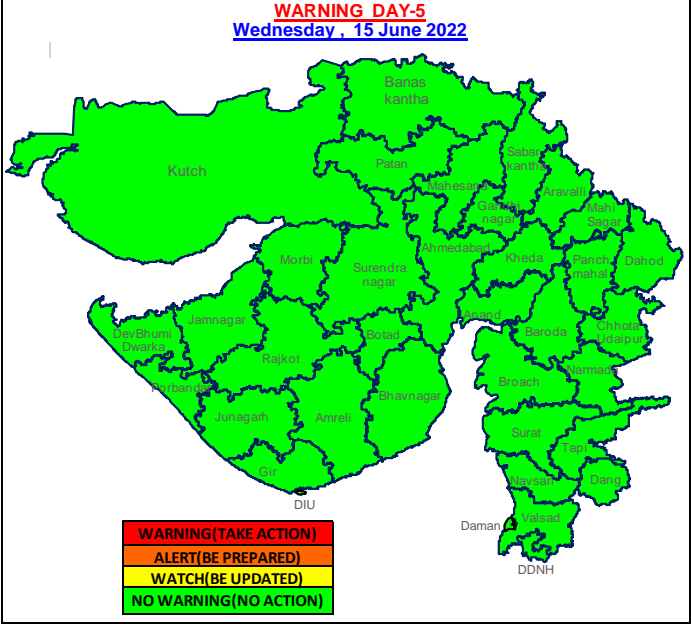
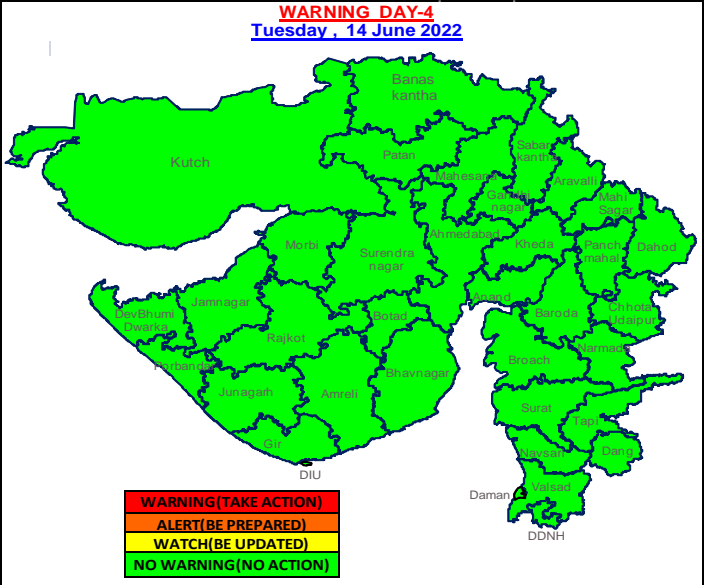
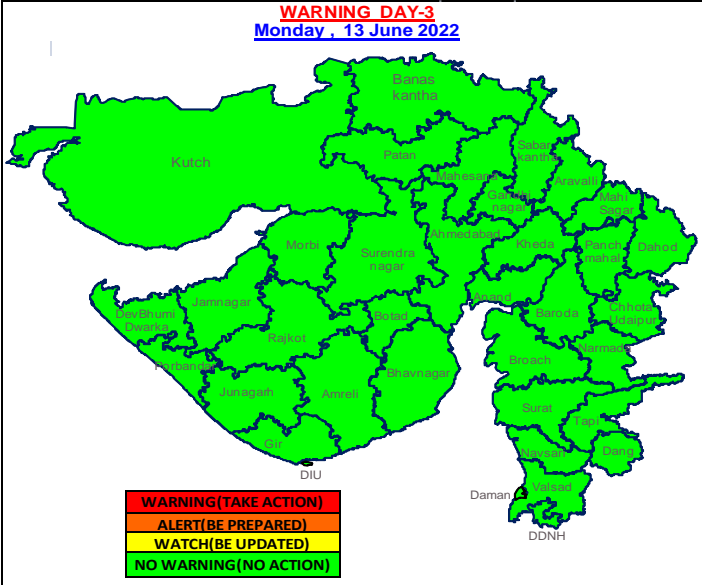
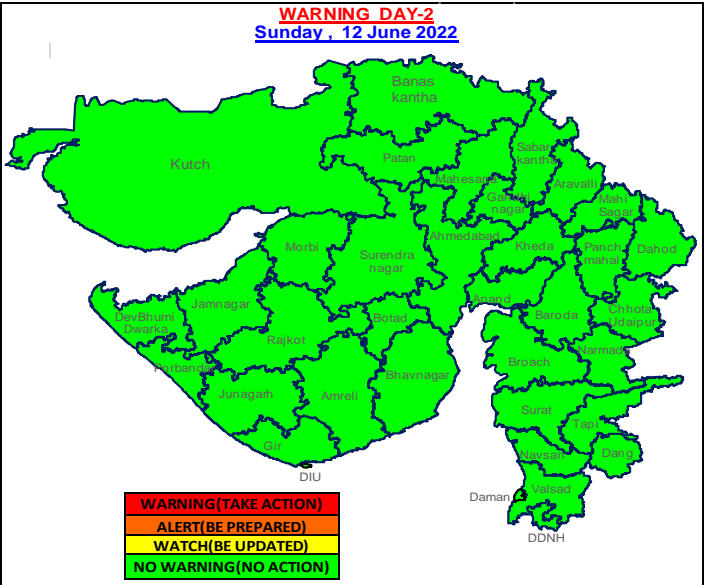
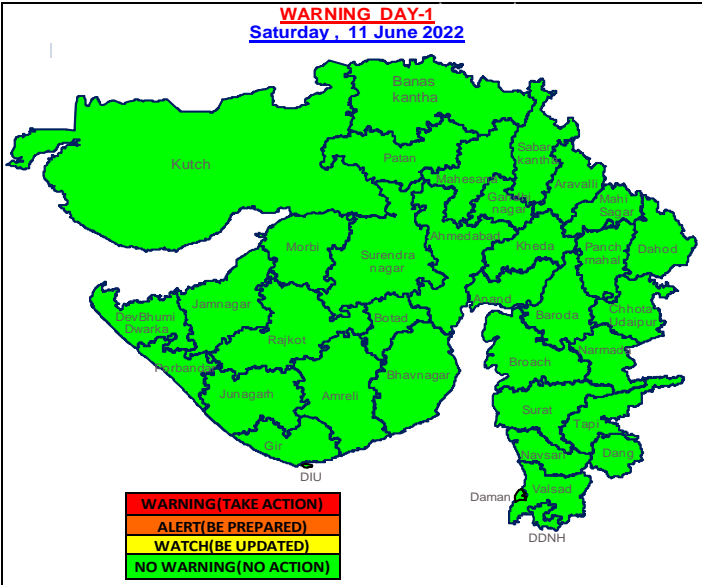
5 DAYS RAINFALL FORECAST FOR THE DISTRICTS OF GUJARAT REGION, DAMAN AND DADRA NAGAR HAVELI						
DATE OF ISSUE : 11-06-2022						
S.NO.	DISTRICT	11 JUN DAY-1 (Today)	12 JUN DAY-2 (Sun)	13 JUN DAY-3 (Mon)	14 JUN DAY-4 (Tue)	15 JUN DAY-5 (Wed)
1	BANASKANTHA	Dry Very Likely	Dry Very Likely	Dry Very Likely	Dry Very Likely	Dry Very Likely
2	PATAN	Dry Very Likely	Dry Very Likely	Dry Very Likely	Dry Very Likely	Dry Very Likely
3	MEHSANA	Dry Very Likely	Dry Very Likely	Dry Very Likely	Dry Very Likely	Dry Very Likely
4	SABARKANTHA	Dry Very Likely	Dry Very Likely	Dry Very Likely	Dry Very Likely	Dry Very Likely
5	GANDHINAGAR	Light to Moderate RA/TSH(at isolated places) Very Likely	Light to Moderate RA/TSH(at isolated places) Very Likely	Dry Very Likely	Dry Very Likely	Dry Very Likely
6	ARAVALLI	Dry Very Likely	Dry Very Likely	Dry Very Likely	Dry Very Likely	Dry Very Likely
7	KHEDA	Light to Moderate RA/TSH(at isolated places) Very Likely	Light to Moderate RA/TSH(at isolated places) Very Likely	Light to Moderate RA/TSH(at isolated places) Very Likely	Light to Moderate RA/TSH(at isolated places) Very Likely	Light to Moderate RA/TSH(at isolated places) Very Likely
8	AHMEDABAD	Light to Moderate RA/TSH(at isolated places) Very Likely	Light to Moderate RA/TSH(at isolated places) Very Likely	Light to Moderate RA/TSH(at isolated places) Very Likely	Dry Very Likely	Dry Very Likely
9	ANAND	Light to Moderate RA/TSH(at isolated places) Very Likely	Light to Moderate RA/TSH(at isolated places) Very Likely	Light to Moderate RA/TSH(at isolated places) Very Likely	Light to Moderate RA/TSH(at isolated places) Very Likely	Light to Moderate RA/TSH(at isolated places) Very Likely
10	BARODA	Light to Moderate RA/TSH(a few places) Very Likely	Light to Moderate RA/TSH(a few places) Very Likely	Dry Very Likely	Dry Very Likely	Dry Very Likely
11	PANCHMAHAL	Light to Moderate RA/TSH(at isolated places) Very Likely	Light to Moderate RA/TSH(at isolated places) Very Likely	Dry Very Likely	Dry Very Likely	Dry Very Likely
12	DOHAD	Light to Moderate RA/TSH(at isolated places) Very Likely	Light to Moderate RA/TSH(at isolated places) Very Likely	Dry Very Likely	Dry Very Likely	Dry Very Likely

13	MAHISAGAR	Light to Moderate RA/TSH(at isolated places) Very Likely	Light to Moderate RA/TSH(at isolated places) Very Likely	Dry Very Likely	Dry Very Likely	Dry Very Likely
14	CHHOTA UDAIPUR	Light to Moderate RA/TSH(a few places) Very Likely	Light to Moderate RA/TSH(a few places) Very Likely	Dry Very Likely	Dry Very Likely	Dry Very Likely
15	NARMADA	Light to Moderate RA/TSH(a few places) Very Likely	Light to Moderate RA/TSH(a few places) Very Likely	Dry Very Likely	Dry Very Likely	Dry Very Likely
16	BROACH	Light to Moderate RA/TSH(a few places) Very Likely	Light to Moderate RA/TSH(a few places) Very Likely	Light to Moderate RA/TSH(at isolated places) Very Likely	Light to Moderate RA/TSH(at isolated places) Very Likely	Light to Moderate RA/TSH(at isolated places) Very Likely
17	SURAT	Light to Moderate RA/TSH(a few places) Very Likely	Light to Moderate RA/TSH(a few places) Very Likely	Light to Moderate RA/TSH(at isolated places) Very Likely	Light to Moderate RA/TSH(at isolated places) Very Likely	Light to Moderate RA/TSH(at isolated places) Very Likely
18	DANGS	Light to Moderate RA/TSH(a few places) Very Likely	Light to Moderate RA/TSH(a few places) Very Likely	Light to Moderate RA/TSH(at isolated places) Very Likely	Light to Moderate RA/TSH(at isolated places) Very Likely	Light to Moderate RA/TSH(at isolated places) Very Likely
19	NAVSARI	Light to Moderate RA/TSH(a few places) Very Likely	Light to Moderate RA/TSH(a few places) Very Likely	Light to Moderate RA/TSH(at isolated places) Very Likely	Light to Moderate RA/TSH(at isolated places) Very Likely	Light to Moderate RA/TSH(at isolated places) Very Likely
20	VALSAD	Light to Moderate RA/TSH(a few places) Very Likely	Light to Moderate RA/TSH(a few places) Very Likely	Light to Moderate RA/TSH(at isolated places) Very Likely	Light to Moderate RA/TSH(at isolated places) Very Likely	Light to Moderate RA/TSH(at isolated places) Very Likely
21	TAPI	Light to Moderate RA/TSH(a few places) Very Likely	Light to Moderate RA/TSH(a few places) Very Likely	Light to Moderate RA/TSH(at isolated places) Very Likely	Light to Moderate RA/TSH(at isolated places) Very Likely	Light to Moderate RA/TSH(at isolated places) Very Likely
U.T	DADARA NAGAR HAVELI	Light to Moderate RA/TSH(a few places) Very Likely	Light to Moderate RA/TSH(a few places) Very Likely	Light to Moderate RA/TSH(at isolated places) Very Likely	Light to Moderate RA/TSH(at isolated places) Very Likely	Light to Moderate RA/TSH(at isolated places) Very Likely
U.T	DAMAN	Light to Moderate RA/TSH(a few places) Very Likely	Light to Moderate RA/TSH(a few places) Very Likely	Light to Moderate RA/TSH(at isolated places) Very Likely	Light to Moderate RA/TSH(at isolated places) Very Likely	Light to Moderate RA/TSH(at isolated places) Very Likely
5 DAYS RAINFALL FORECAST FOR THE DISTRICTS OF SAURASHTRA, KUTCH AND DIU						
22	SURENDRANAGAR	Dry Very Likely	Light to Moderate RA/TSH(at	Light to Moderate RA/TSH(a few	Dry Very Likely	Dry Very Likely

			isolated places) Very Likely	places) Very Likely		
23	RAJKOT	Light to Moderate RA/TSH(at isolated places) Very Likely	Light to Moderate RA/TSH(at isolated places) Very Likely	Light to Moderate RA/TSH(a few places) Very Likely	Light to Moderate RA/TSH(a few places) Very Likely	Light to Moderate RA/TSH(a few places) Very Likely
24	JAMNAGAR	Dry Very Likely	Dry Very Likely	Light to Moderate RA/TSH(a few places) Very Likely	Dry Very Likely	Dry Very Likely
25	PORBANDAR	Dry Very Likely	Dry Very Likely	Light to Moderate RA/TSH(a few places) Very Likely	Light to Moderate RA/TSH(a few places) Very Likely	Light to Moderate RA/TSH(a few places) Very Likely
26	JUNAGADH	Light to Moderate RA/TSH(at isolated places) Very Likely	Light to Moderate RA/TSH(at isolated places) Very Likely	Light to Moderate RA/TSH(a few places) Very Likely	Light to Moderate RA/TSH(a few places) Very Likely	Light to Moderate RA/TSH(a few places) Very Likely
27	AMRELI	Light to Moderate RA/TSH(at isolated places) Very Likely	Light to Moderate RA/TSH(at isolated places) Very Likely	Light to Moderate RA/TSH(a few places) Very Likely	Light to Moderate RA/TSH(a few places) Very Likely	Light to Moderate RA/TSH(a few places) Very Likely
28	BHAVNAGAR	Light to Moderate RA/TSH(at isolated places) Very Likely	Light to Moderate RA/TSH(at isolated places) Very Likely	Light to Moderate RA/TSH(a few places) Very Likely	Light to Moderate RA/TSH(a few places) Very Likely	Light to Moderate RA/TSH(a few places) Very Likely
29	MORBI	Dry Very Likely	Dry Very Likely	Light to Moderate RA/TSH(a few places) Very Likely	Dry Very Likely	Dry Very Likely
30	DEVBHUMI DWARKA	Dry Very Likely	Dry Very Likely	Light to Moderate RA/TSH(a few places) Very Likely	Light to Moderate RA/TSH(a few places) Very Likely	Light to Moderate RA/TSH(a few places) Very Likely
31	GIR SOMNATH	Light to Moderate RA/TSH(at isolated places) Very Likely	Light to Moderate RA/TSH(at isolated places) Very Likely	Light to Moderate RA/TSH(a few places) Very Likely	Light to Moderate RA/TSH(a few places) Very Likely	Light to Moderate RA/TSH(a few places) Very Likely
32	BOTAD	Light to Moderate RA/TSH(at isolated places) Very Likely	Light to Moderate RA/TSH(at isolated places) Very Likely	Light to Moderate RA/TSH(a few places) Very Likely	Dry Very Likely	Dry Very Likely
33	KUTCH	Dry Very Likely	Dry Very Likely	Light to Moderate RA/TSH(at isolated places) Very Likely	Light to Moderate RA/TSH(at isolated places) Very Likely	Dry Very Likely
U.T	DIU	Light to Moderate RA/TSH(at	Light to Moderate RA/TSH(at	Light to Moderate RA/TSH(a few	Light to Moderate RA/TSH(a few	Light to Moderate RA/TSH(a few

		isolated places) Very Likely	isolated places) Very Likely	places) Very Likely	places) Very Likely	places) Very Likely
--	--	------------------------------------	------------------------------------	------------------------	------------------------	------------------------

(WARNING)



Legends:-

INTENSITY OF RAINFALL		हिन्दी / गुजराती
VERY LIGHT	0.1 TO 2.4 MM	बहुत हल्की वर्षा / બહુજ ઓછુ વરસાદ
LIGHT	2.5 - 15.5 MM	हल्की वर्षा / ઓછો વરસાદ
MODERATE	15.6 - 64.4 MM	मध्यम वर्षा / મધ્યમ વરસાદ
HEAVY	64.5 - 115.5 MM	भारी वर्षा / ભારે વરસાદ
VERY HEAVY	115.6 - 204.4 MM	बहुत भारी वर्षा / ખૂબ ભારે વરસાદ
EXTREMELY HEAVY	≥ 204.5 MM	अत्यधिक भारी वर्षा / અત્યંત ભારે વરસાદ
EXCEPTIONALLY HEAVY	WHEN THE AMOUNT IS A VALUE NEAR ABOUT THE HIGHEST RECORDED RAINFALL AT OR NEAR THE STATION FOR THE MONTH OR SEASON. HOWEVER, THIS TERM WILL BE USED ONLY WHEN THE ACTUAL RAINFALL AMOUNT EXCEEDS 12 CM	असाधारण भारी वर्षा / અસામાન્ય ભારે વરસાદ

PROBABILITY OF OCCURENCE (%)	हिन्दी	ગુજરાતી
UNLIKELY	संभावना नहीं	શક્યતા નથી.
LIKELY	संभावित	શક્યતા છે.
VERY LIKELY	अधिक संभावना	વધારે શક્યતા છે.
MOST LIKELY	अत्याधिक संभावना	અત્યાધિક શક્યતા છે.

WARNING COLOUR CODES	हिन्दी	ગુજરાતી
WARNING (TAKE ACTION)	चेतावनी	ચેતાવણી
ALERT (BE PREPARED)	सतर्क रहें	સતર્ક રહો
WATCH (BE UPDATED)	निगरानी रखें	ધ્યાન આપો
NO WARNING (NO ACTION)	कोई चेतावनी नहीं	કોઈ ચેતાવણી નથી